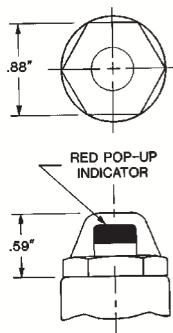


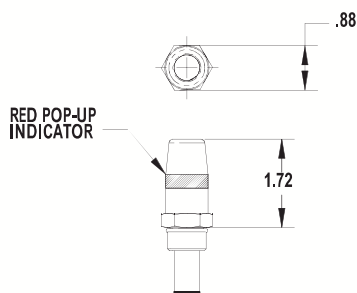
# DIFFERENTIAL PRESSURE ( $\Delta P$ ) INDICATORS

## DP03 Series



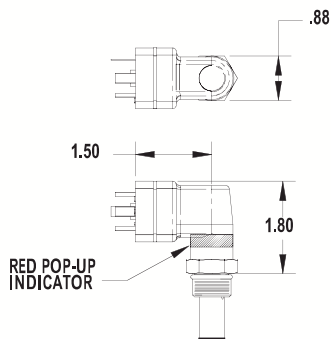
Low Pressure Visual Indicator  
 200 psi max Operating Pressure  
 Temperatures up to 150°F  
 Automatic Resetting  
 Factory Installed. Available as kit for field replacement.  
 For use with DF, SF, MF, MFT, & ZDF Series Only

## DP04 Series

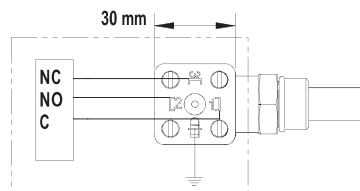


Cartridge Style Visual Indicator  
 3000 psi max Operating Pressure (6000 psi for 80 psid units)  
 Temperatures up to 200°F  
 Automatic Resetting  
 Factory Installed. Available as kit for field replacement.

## DP05 Series

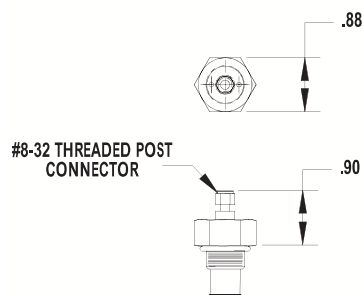


Cartridge Style Visual/Electrical Indicator  
 DIN 43650 Type A Male Plug (11mm)  
 1NO, 1NC, & Common SPDT Switch (3 pole & ground)  
 5A; 125/250 VAC, 24 VDC (Resistive)  
 3000 psi max Operating Pressure (6000 psi for 80 psid units)  
 Temperatures up to 200°F  
 Automatic Resetting  
 Factory Installed. Available as kit for field replacement.



# DIFFERENTIAL PRESSURE ( $\Delta P$ ) INDICATORS

## DP06 Series



Cartridge Style Single Wire DC Indicator

200mA @ 36VDC

Momentary - Normally Open Circuit

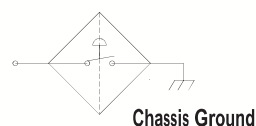
3000 psi max Operating Pressure (6000 psi for 80 psid units)

Temperatures up to 200°F

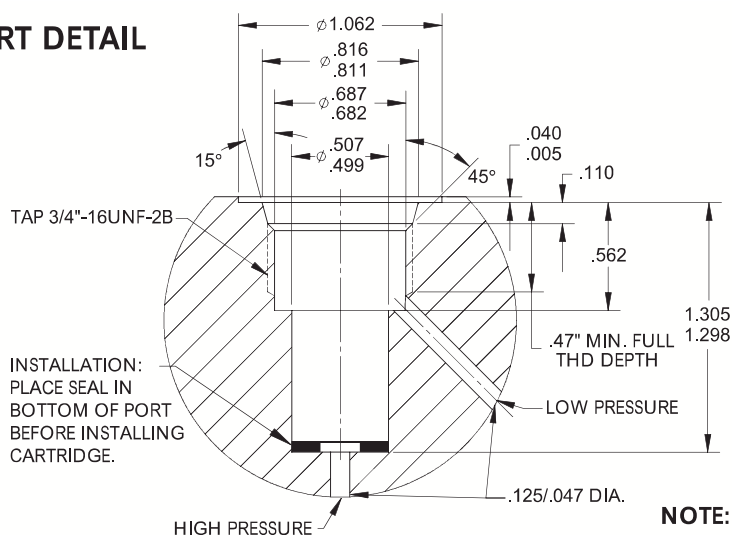
Automatic Resetting

Factory Installed. Available as kit for field replacement.

Ground Through Filter Head to Chassis. (In Oil)



## INDICATOR PORT DETAIL



NOTE: TOP PORTION OF INDICATOR PORT PARALLEL TO SAE-8

ACCESSORIES

## HOW TO ORDER:

## DPXX - XXX

Code	Type
03**	Visual Low Pressure*
04	Visual Cartridge
05	Visual / Electrical DIN
06	Single Wire DC Electrical
** Use on DF, SF, MF, MFT, & ZDF Series Only	

Code	Indicator Setting	Filter Bypass Setting
04K	4 PSID	5 psid
13K	13 PSID	15 psid
22K	22 PSID	25 psid
44K	44 PSID	50 psid
80K*	80 PSID	90 psid
* 80 PSID available on DP04 & DP05 series only		