



ZAF05 Series

Spin-On Filter Heads

Used with AE & ZAE Filter Elements

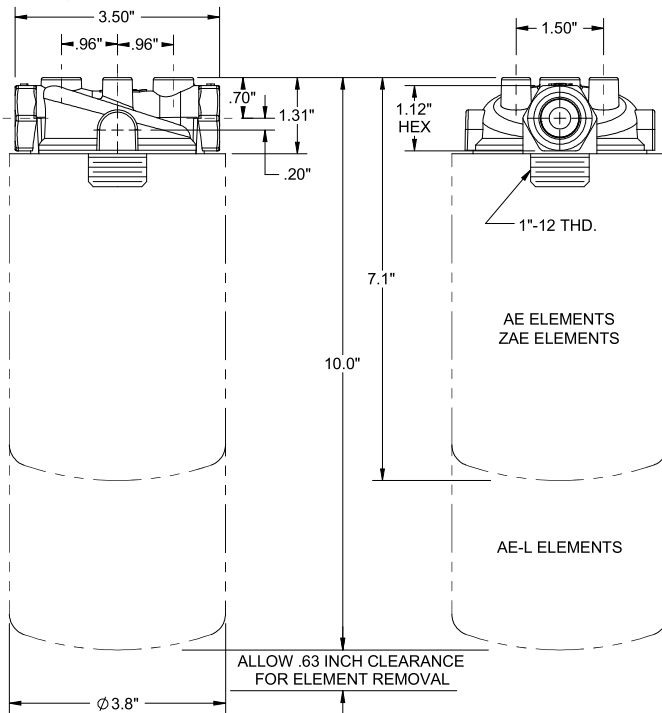
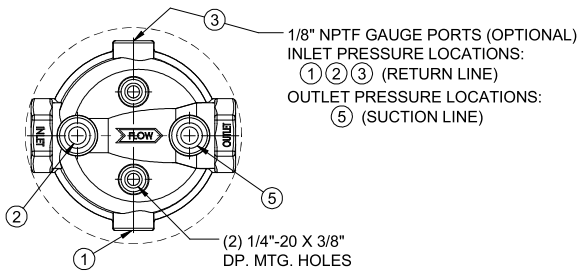
Flows Up To: 22 GPM (return) 5 GPM (suction)

Port Sizes: 1/2" NPTF; 3/4"-16 UN(SAE-8)

Pressure: 200 PSI Max. Operating

Temperature: Up to + 250°F Operating

Applications: Petroleum based fluids
Consult factory for synthetic fluids



HOW TO ORDER: ZAF XX XX XXX

Code	Inlet & Outlet Ports
05	1/2" NPTF
08	3/4"-16 UN (SAE-8)

Code	By-Pass Valve Setting
00	No By-Pass
30	30 PSI

Code	Gauge Port Location
0	No Port
13	1 & 3 (Return Line)
1235	1, 2, 3, 5 (All)

